

PL23XX USB-to-Serial Bridge Chip Family

Windows Driver Installer User Manual

WHQL Driver Version Information

- ❖ Driver Installer & Build date: **4.2.1.0 (2024-01-05)**
 - GUID: 618D450A-B26A-4CB2-ABCA-F59C209B312E
- ❖ Driver Versions:
 - PL2303GC / GS / GT / GL / GE / GR / GD
 - ◆ WDF WHQL Driver: **v5.2.6.0 (04/20/2023) - for Windows 11**
 - ◆ WDF WHQL Driver: **v5.1.6.0 (04/13/2023) - for Windows 7 / 8.1 / 10;**
 Server2008/2008R2/2012/2012R2/2016/2019/2022 (32 & 64-bit)
 - PL2303HDX / EA / RA / SA / TA / TB:
 - ◆ WDF WHQL Driver: **v3.9.5.0 (02/24/2023) - for Windows 11**
 - ◆ WDF WHQL Driver: **v3.8.42.0 (02/22/2023) - for Windows 7 / 8.1 / 10;**
 Server2008/2008R2/2012/2012R2/2016/2019/2022
 - Drivers automatically install via Windows Update (need Internet connection, Only for Win10 / Win11)

System Requirements

- ❖ PC with USB 1.1/2.0/3.0/3.1 Host Controller (USB Port) and Windows OS.
- ❖ USB Device with below PL-23XX chip versions and their supported OS Family:

Chip Version	Windows 7 / 8 / 8.1 (32 & 64 bit)	Windows 10 Server 2022 (32 & 64 bit)	Windows 11 (64 bit)
PL2303HDX / EA / RA / SA / TB	Yes	Yes	Yes
PL2303TA	Yes	Yes	Not Supported*
PL2303GC / GS / GT / GL / GE / GR / GD	Yes	Yes	Yes

* - PL2303TA is EOL and discontinued chips and Prolific will not provide Windows 11 (and above versions) driver support.

Microsoft Hardware Certification Report

Prolific driver has been tested and submitted for Microsoft Windows hardware certification.

PL2303G: Win11 WHQL



Microsoft

Hardware certification report **Approved**

Private product ID: **13767798015043006**
Shared product ID: **401601555**
Submission ID: **1152921505697180205**
Submission date: **12/20/2023**
Completion date: **12/20/2023**
Company: **Prolific Technology Inc.**
Product name: **PL2303G_DLL_Win11_21H2_23H2_v5.2.6.0_20231220_HLK**
Category: **Device**
Product type: **Other Device**
Qualification level: **Certified for Microsoft Windows 11 Client family version 22H2, x64**
Certified for Microsoft Windows Hardware Compatibility Program – Client family version 21H2, x64
Certified as Declarative INF
Marketing name: **PL2303G_DLL_Win11_21H2_23H2_v5.2.6.0_20231220_HLK**

PL2303D : Win11 WHQL



Microsoft

Hardware certification report **Approved**

Private product ID: **13870775919677662**
Shared product ID: **401601426**
Submission ID: **1152921505697180387**
Submission date: **12/20/2023**
Completion date: **12/20/2023**
Company: **Prolific Technology Inc.**
Product name: **PL2303D_DLL_Win11_21H2+23H2_v3.9.5.0_20231220_HLK**
Category: **Device**
Product type: **Other Device**
Qualification level: **Certified for Microsoft Windows 11 Client family version 22H2, x64**
Certified for Microsoft Windows Hardware Compatibility Program – Client family version 21H2, x64
Certified as Declarative INF
Marketing name: **PL2303D_DLL_Win11_21H2+23H2_v3.9.5.0_20231220_HLK**

PL2303G: Win 7 / 8 / 10 WHQL



Microsoft

Hardware certification report **Approved**

Private product ID: **14471345514529622**

Shared product ID: **401569946**

Submission ID: **1152921505697065658**

Submission date: **11/24/2023**

Completion date: **11/24/2023**

Company: **Prolific Technology Inc.**

Product name: **PL2303G_DLL_Win7~10_TH1_RS5_22H2_v5.1.6.0_20231124_HLK**

Category: **Device**

Product type: **Other Device**

Qualification level: **Certified for Microsoft Windows 10 Client family version 2004, x64**
Certified for Microsoft Windows 10 Client family version 2004, x86
Logo - Device - Compatible with Windows 7 x64
Logo - Device - Compatible with Windows 7
Certified for Microsoft Windows 8.1 Client family, x64
Certified for Microsoft Windows 8.1 Client family, x86
Certified for Microsoft Windows 10 Client family versions 1506 and 1511, x64
Certified for Microsoft Windows 10 Client family versions 1506 and 1511, x86
Certified for Microsoft Windows 10 Client family version 1809, x64
Certified for Microsoft Windows 10 Client family version 1809, x86
Certified as Declarative INF

Marketing name: **PL2303G_DLL_Win7~10_TH1_RS5_22H2_v5.1.6.0_20231124_HLK**

PL2303D : Win7 / 8 / 10 WHQL



Microsoft
Hardware certification report **Approved**



Microsoft
Hardware certification report **Approved**

Private product ID: **13767798015043006**
Shared product ID: **401601555**
Submission ID: **1152921505697180205**
Submission date: **12/20/2023**
Completion date: **12/20/2023**
Company: **Prolific Technology Inc.**
Product name: **PL2303G_DLL_Win11_21H2_23H2_v5.2.6.0_20231220_HLK**
Category: **Device**
Product type: **Other Device**
Qualification level: **Certified for Microsoft Windows 11 Client family version 22H2, x64**
Certified for Microsoft Windows Hardware Compatibility Program – Client family version 21H2, x64
Certified as Declarative INF
Marketing name: **PL2303G_DLL_Win11_21H2_23H2_v5.2.6.0_20231220_HLK**

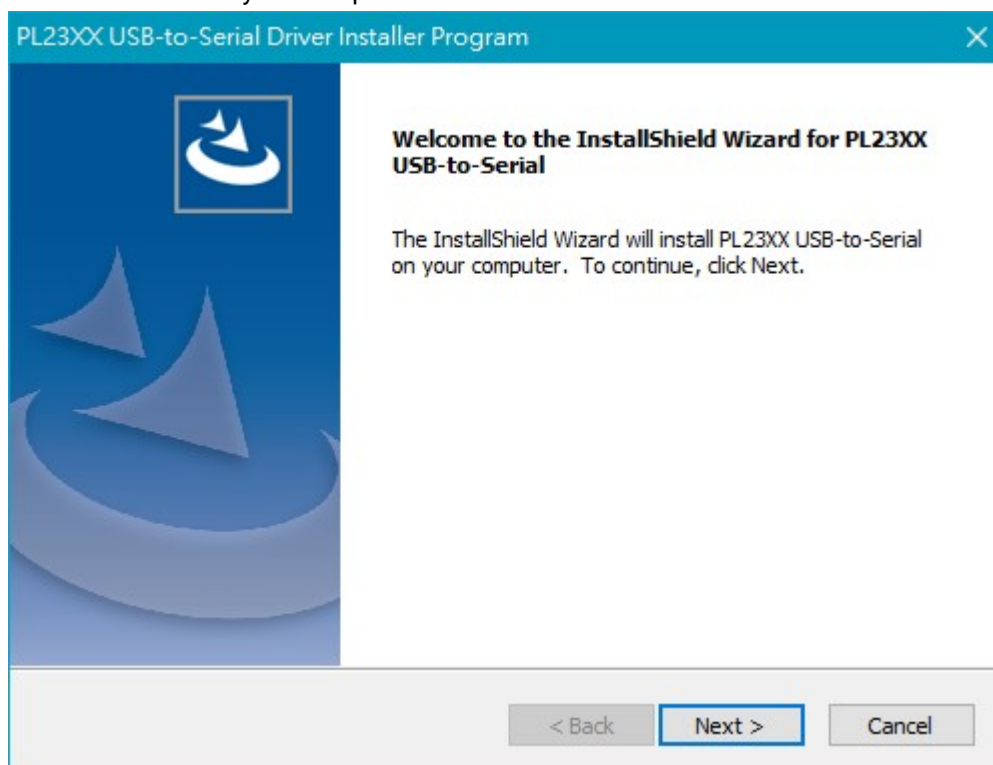
Windows Driver Installation

This section will guide you on how to install the PL-23XX Windows Driver. You can download the latest Driver Installer program from Prolific Support website:

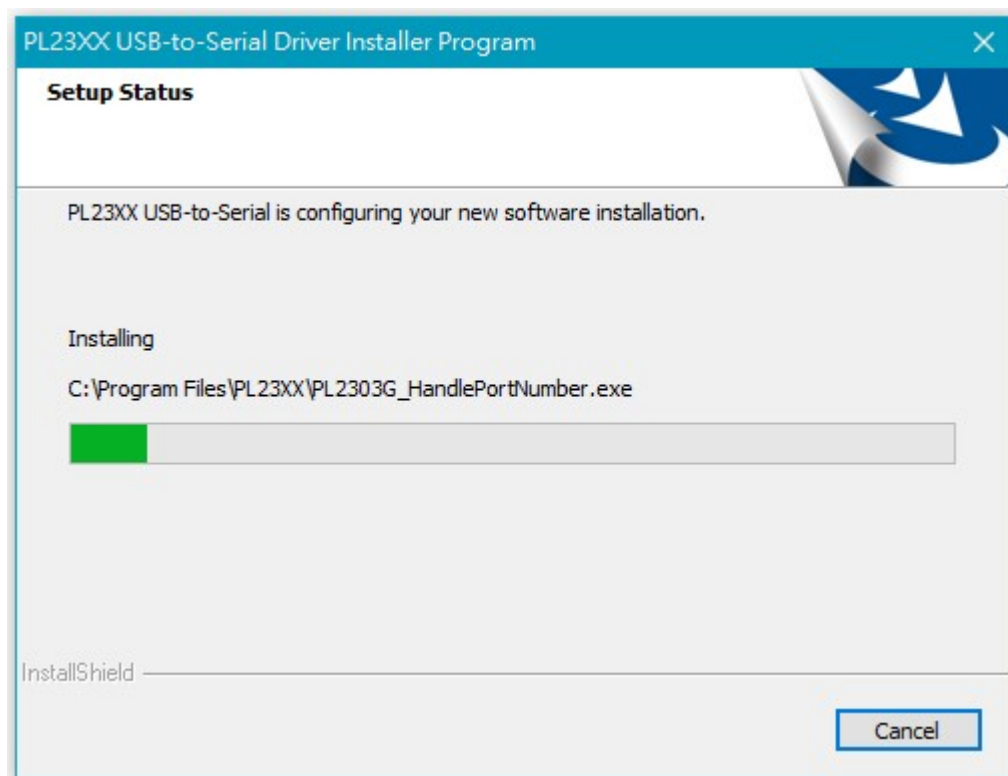
http://www.prolific.com.tw/US/ShowProduct.aspx?p_id=225&pcid=41

The following steps will show how to install the device under **Windows 10 (64-bit)** OS as this is the most inquired driver installation support received by Prolific. The procedures are the same and straight- forward for all other supported Windows operating system versions.

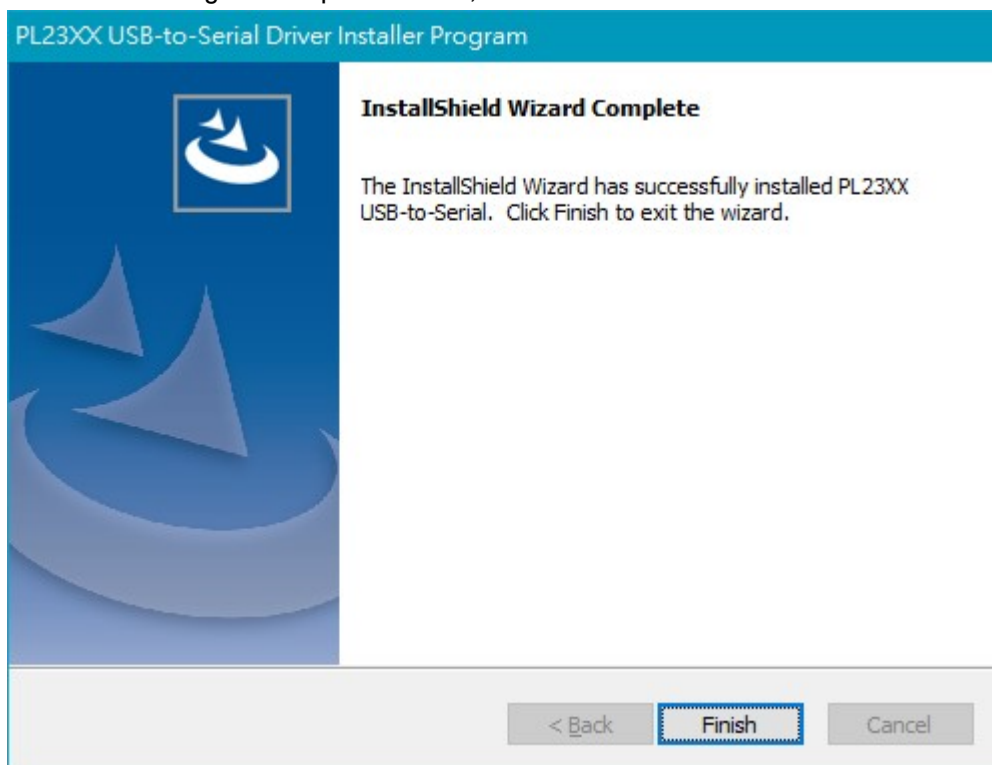
1. Power on your computer and boot to Windows. Run or double-click the PL-23XX Windows Driver Installer program.
2. The InstallShield Wizard will be displayed to inform you that the PL-23XX USB-to-Serial driver will be installed on your computer. Click Next to continue.



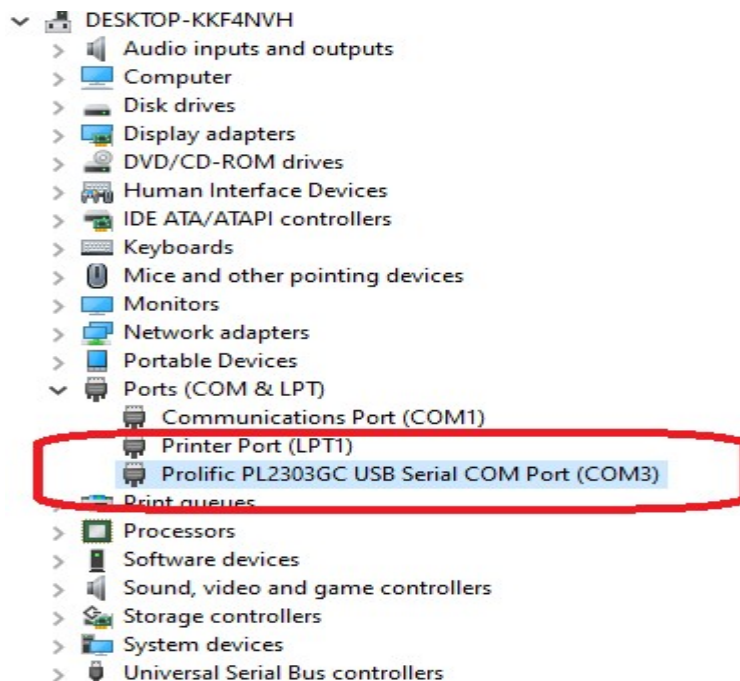
3. The PL-23XX Driver Installer program will then start to install the drivers needed.



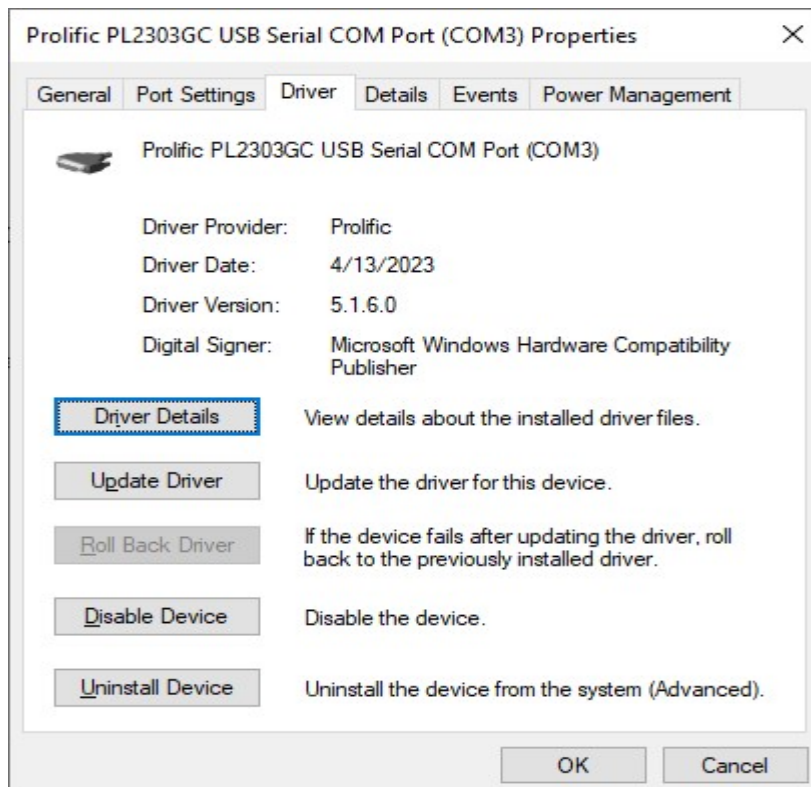
4. Click the Finish button to close the InstallShield program. If you have plugged the cable into the PC while running the setup installation,



5. Plug in the USB to Serial adapter (PL2303GC chip) to the PC USB port. Windows should detect the driver as Prolific PL2303GC USB Serial COM Port. Go to Device Manager and check for the “Prolific PL2303GC USB Serial COM Port” device and the COM port number assigned by Windows.

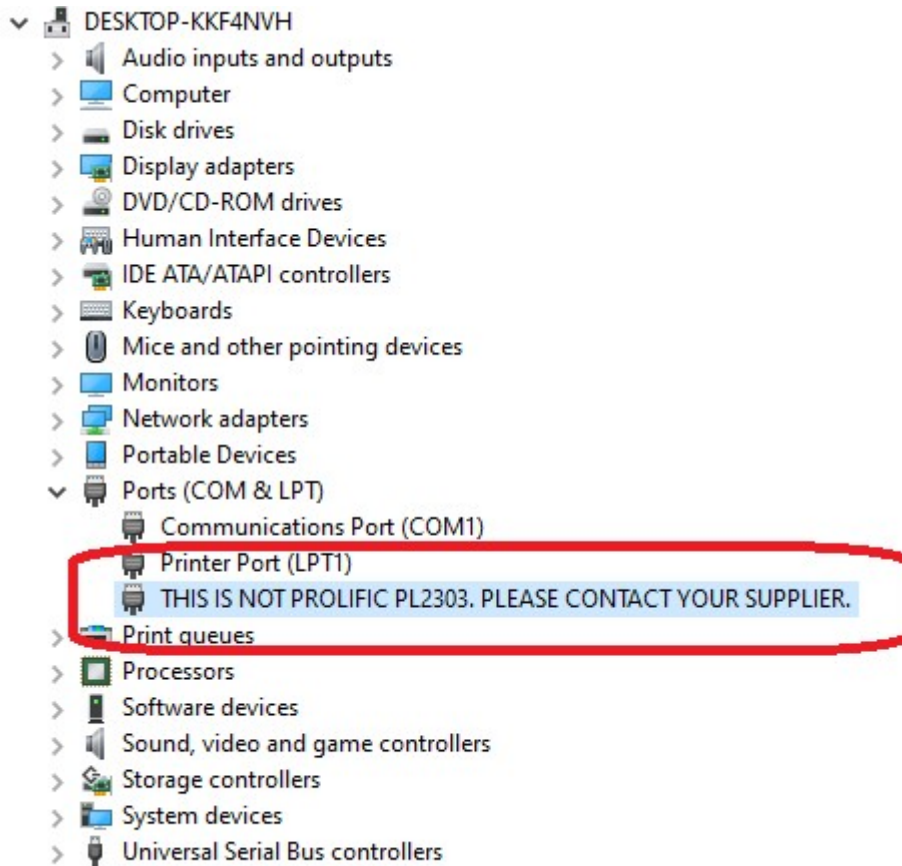


6. You can also check the driver version by right-clicking on the “Prolific PL2303GC USB Serial COM Port” device and select Properties and Driver tab.



Warning!!!

If you are encountering “THIS IS NOT PROLIFIC PL2303. PLEASE CONTACT YOUR SUPPLIER.” for device in Device Manager under Windows 7/ 8 / 10 / 11 , you need to contact the cable vendor or manufacturer for possible counterfeit chip. Prolific does not manufacture or sell any end-user market products and will not provide or be responsible for direct support to end-users.



Windows Driver Installation (via Windows Update)

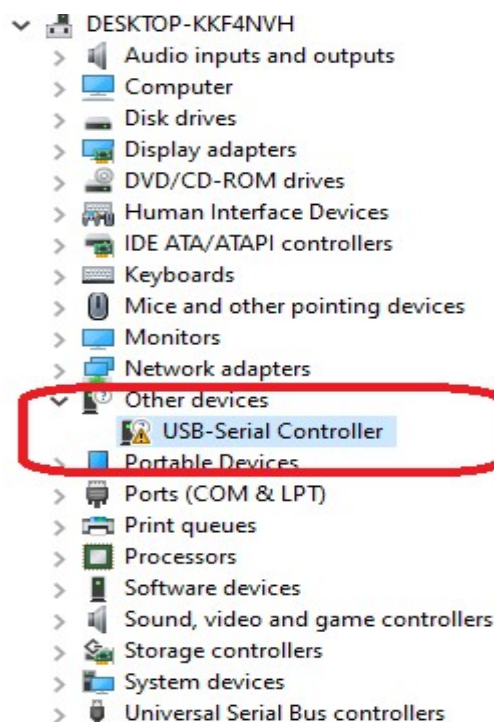
This section guides you on how to install the PL-2303 Windows Driver via Windows Update. You will need an Internet connection to automatically download and install the drivers via Windows Update:

Operating Systems	Windows 7 (32 & 64 bit)	Windows 8 / 8.1 (32 & 64 bit)	Windows 10 (32 & 64 bit)	Windows 11 (64 bit)
Windows Update	Not Supported*	Not Supported*	<input checked="" type="checkbox"/>	<input checked="" type="checkbox"/>

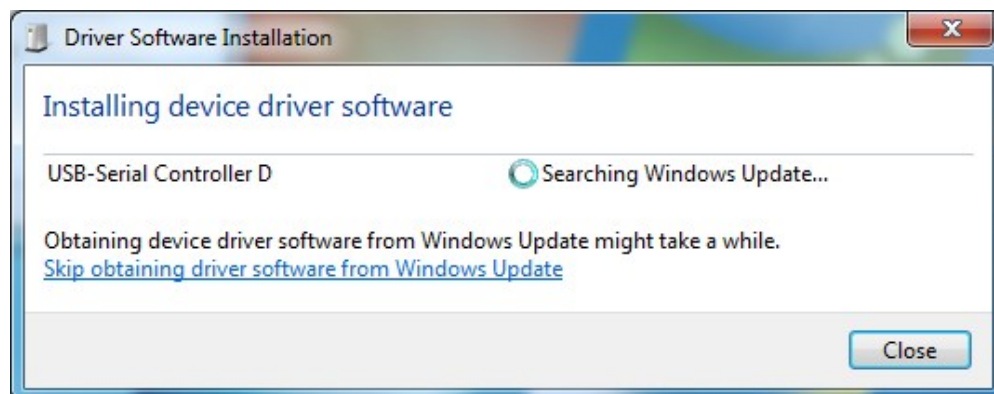
* - Windows 7 support ended on January 14, 2020 by Microsoft

* - Windows 8.1 support ended on January 10, 2023 by Microsoft

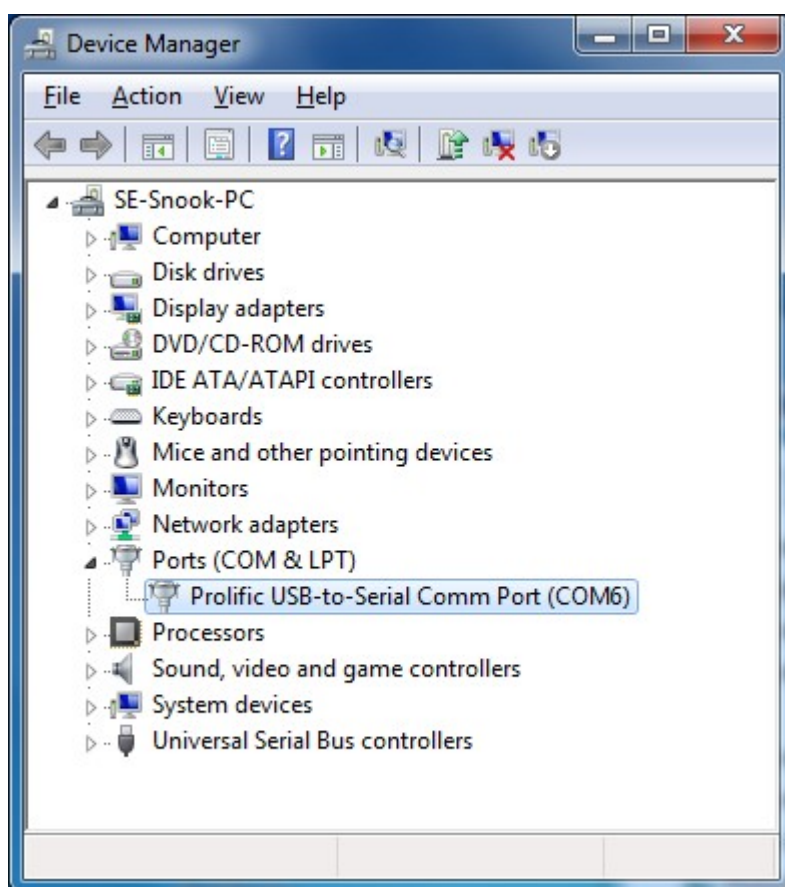
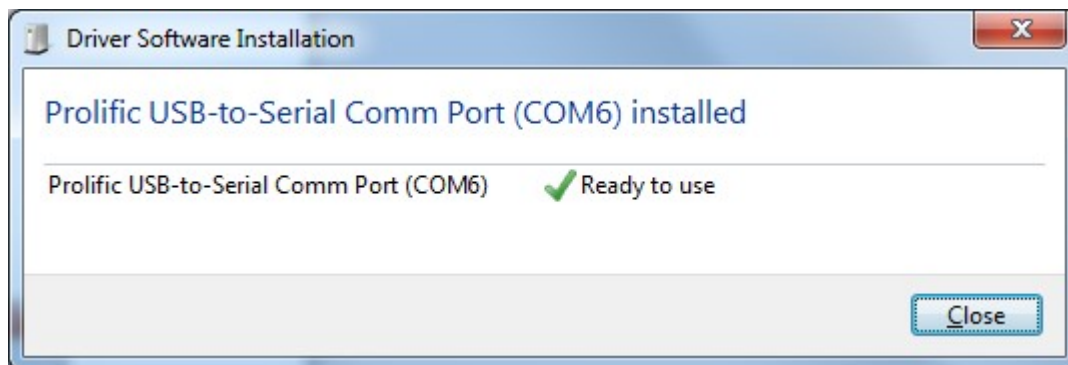
1. Check if your Internet connection is OK. Plug in PL-2303 USB to Serial cable.



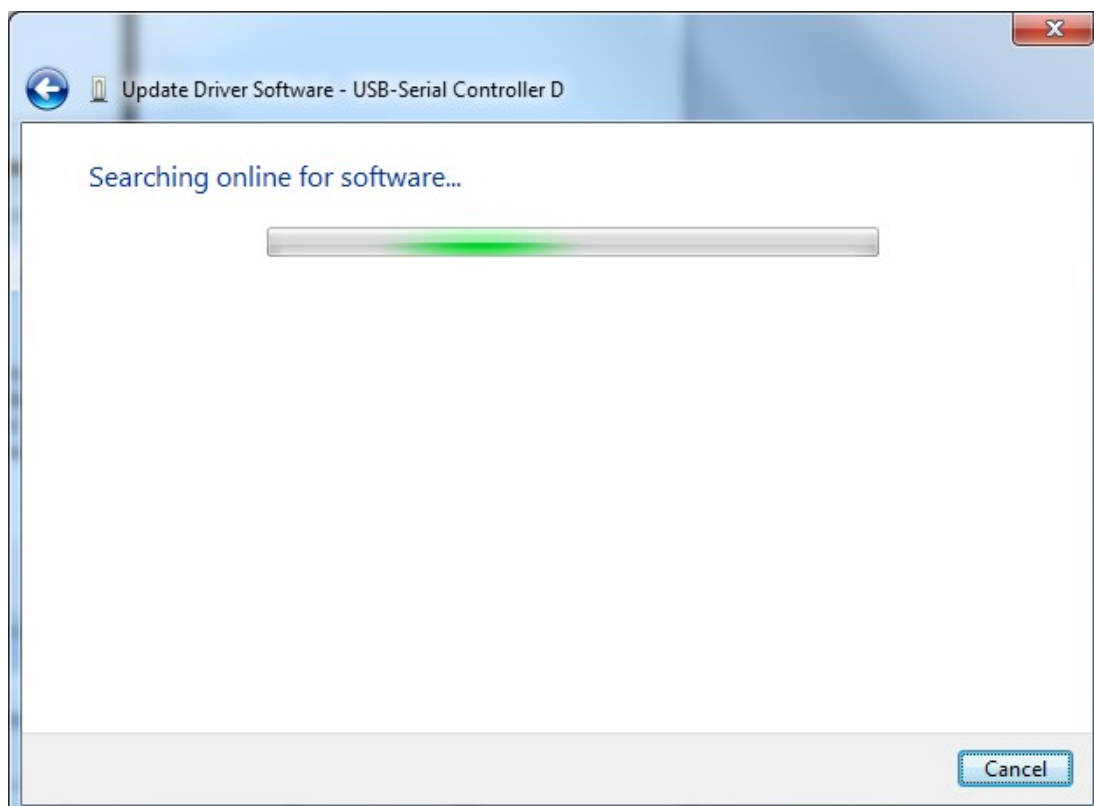
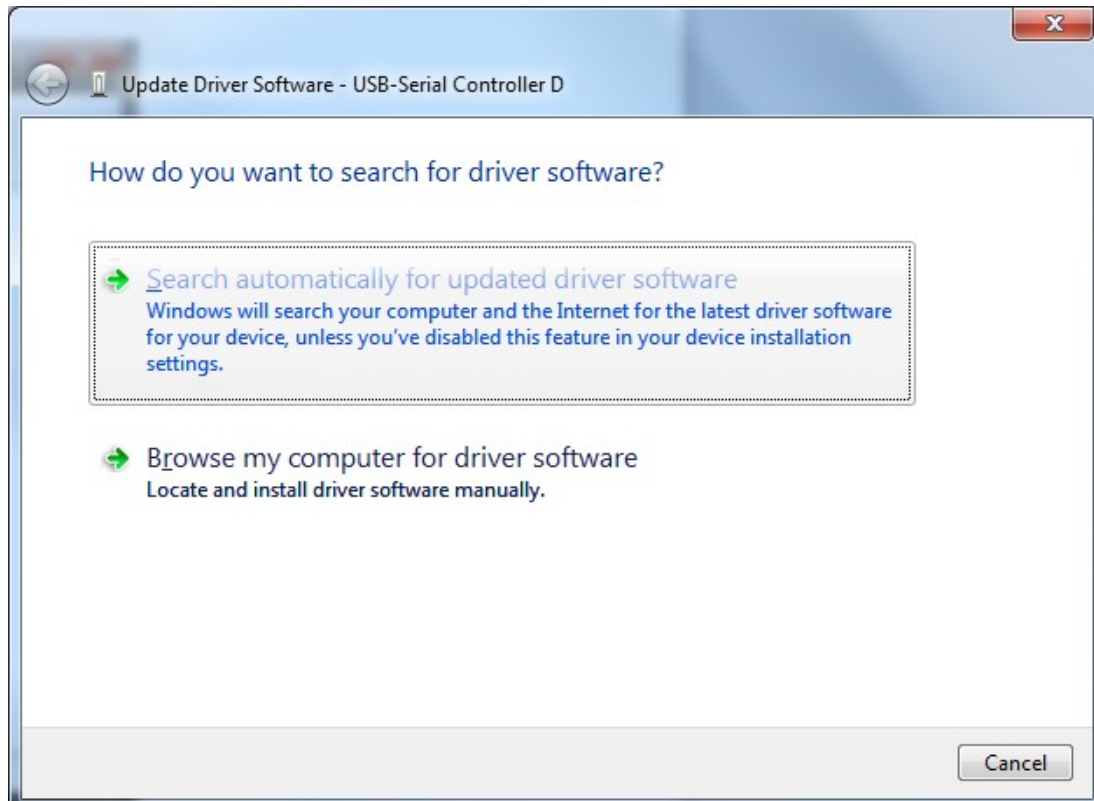
2. Windows will automatically check Windows Update if driver is available and will download and install the driver instantly.

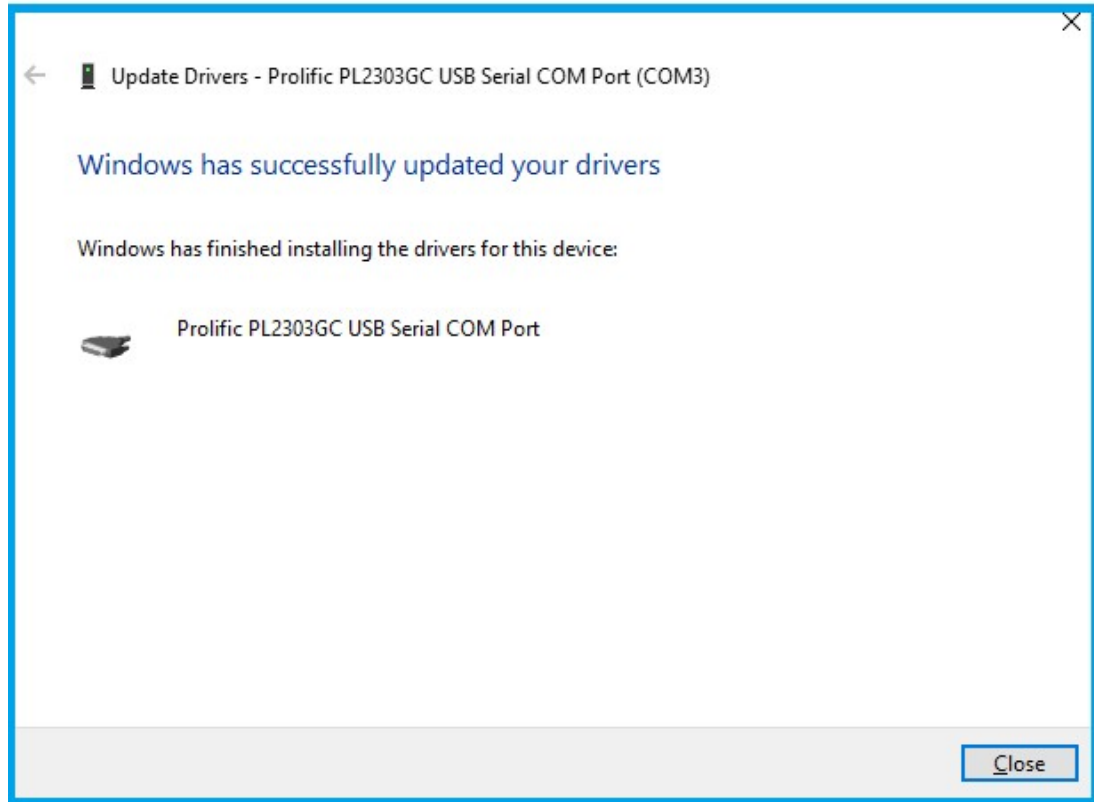
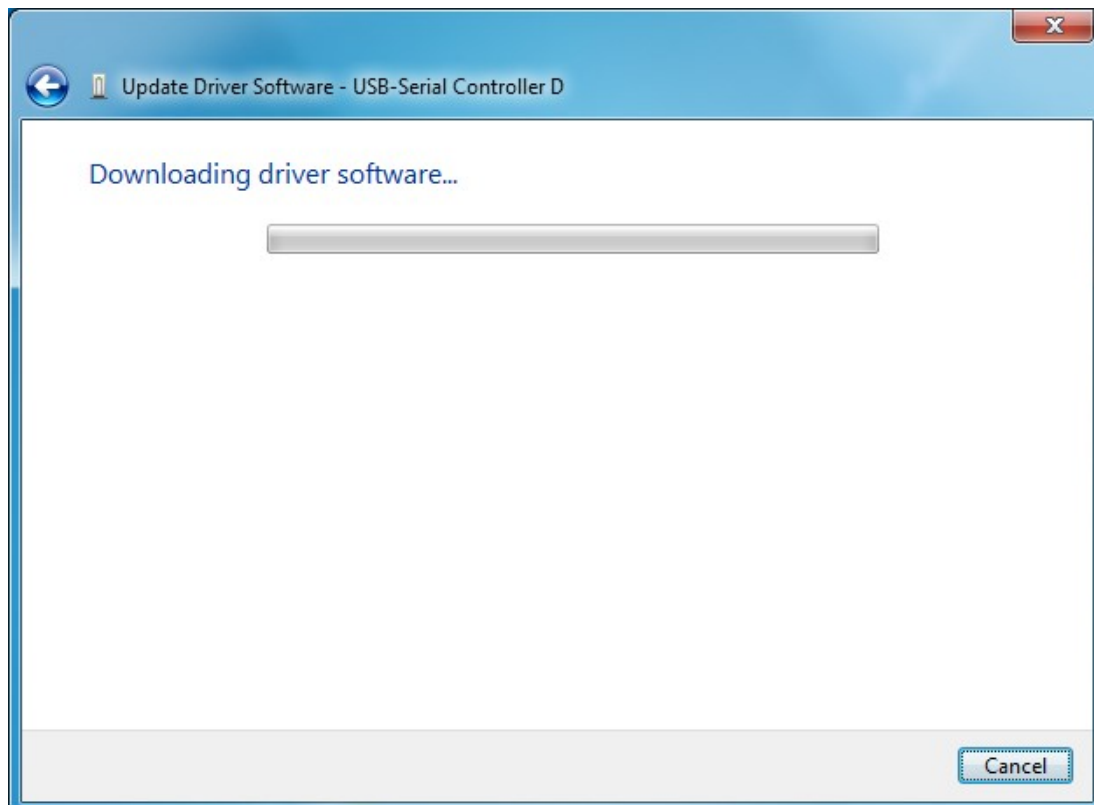


- Windows will then prompt you that Prolific USB-to-Serial Comm Port (COMx) is installed and ready to use.



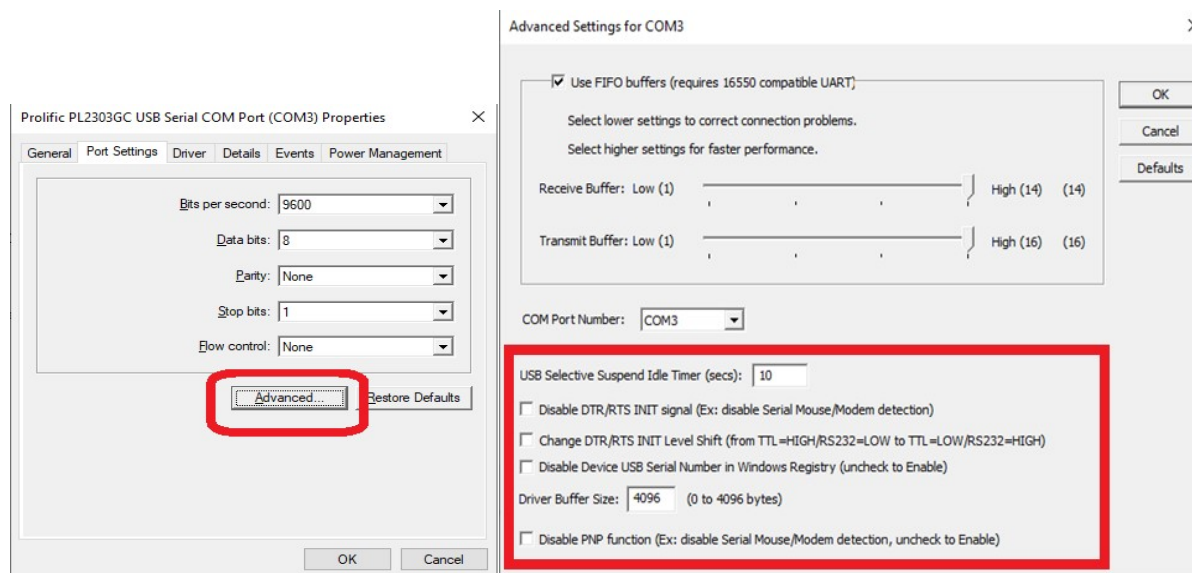
4. You can also right-click on the USB-Serial Controller device and click Update Driver.





Driver Advanced Settings

Starting from Driver v3.8.18.0, there are several advanced settings which users can control.

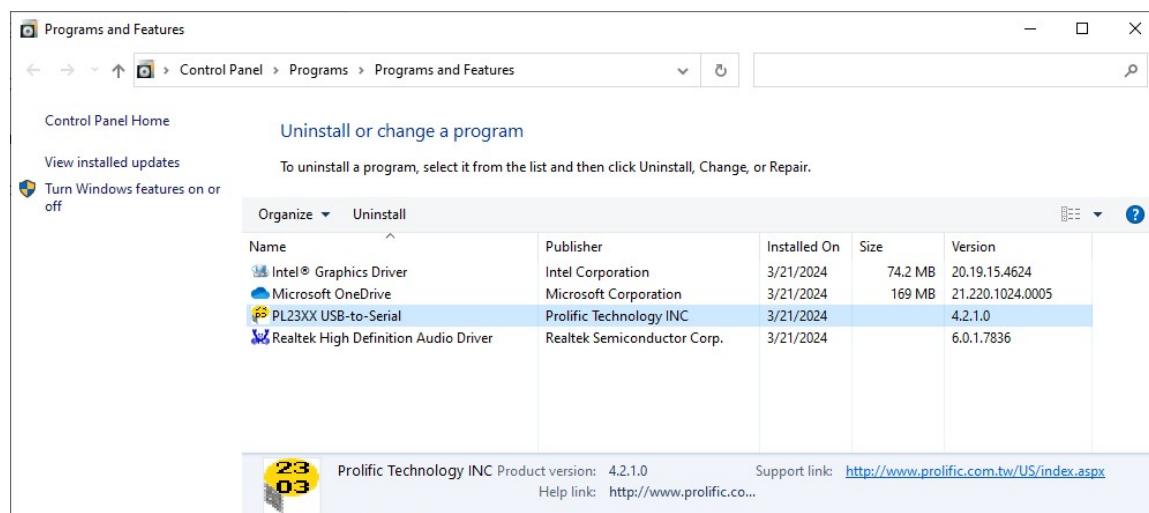


No.	Advanced Setting	Default	Description
1	USB Selective Suspend Idle Timer	10 sec	Idle Timer for the PL2303 chip to enter suspend mode (COM port not open). NOTE: For PL2303HxD/EA/RA, you need to write OTPROM first. This option does not work for PL2303SA.
2	Disable DTR/RTS INIT signal	Enable	Check this item to disable DTR/RTS pin initialization signal during driver load. NOTE: This will prevent driver from detecting serial mouse and serial modem.
3	Change DTR/RTS INIT Level Shift	TTL=HIGH RS232=LOW	Check to change DTR/RTS INIT level shift to TTL=LOW and RS232=HIGH. NOTE: This item will not work if "Disable DTR/RTS INIT signal" is on.
4	Disable Device USB Serial Number in Windows Registry	Enable	Check this to ignore PL2303 device Serial Number (set IgnoreHWSerNum in Windows registry). If disabled, each PL2303 device with different USB serial number will be treated as same device (no serial number) when plug to same USB port and will keep the same COM port number. This feature is useful for factory manufacturing use so the COM port number will not accumulate.
5	Driver Buffer Size	4096	Control the driver buffer size.
6	Disable PNP function	Enable	Check this item to disable PNP function (DTR/RTS pin) during driver load.

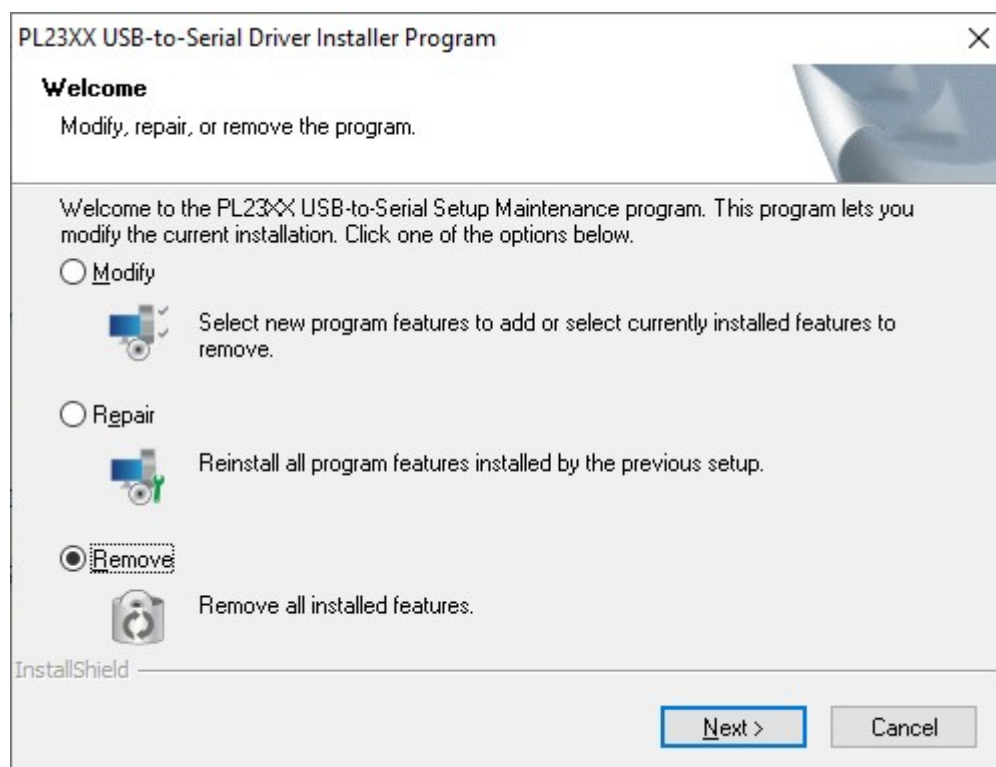
Uninstalling the PL-2303 Driver

To uninstall the PL-2303 driver, follow the below steps:

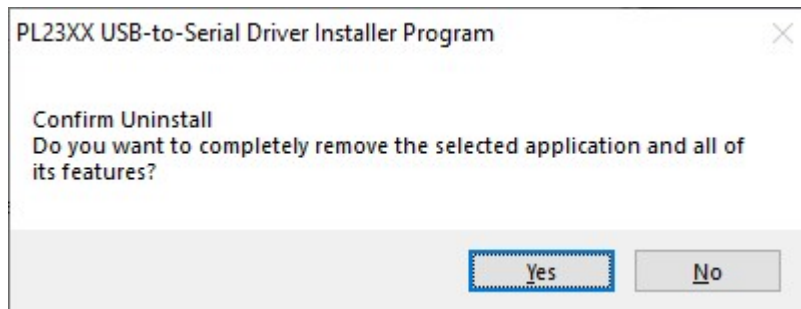
1. Click Start - Control Panel - Programs - Programs and Features - Uninstall a Program. Look for the "PL-23XX USB-to-Serial" program and click the Uninstall (Remove) button.



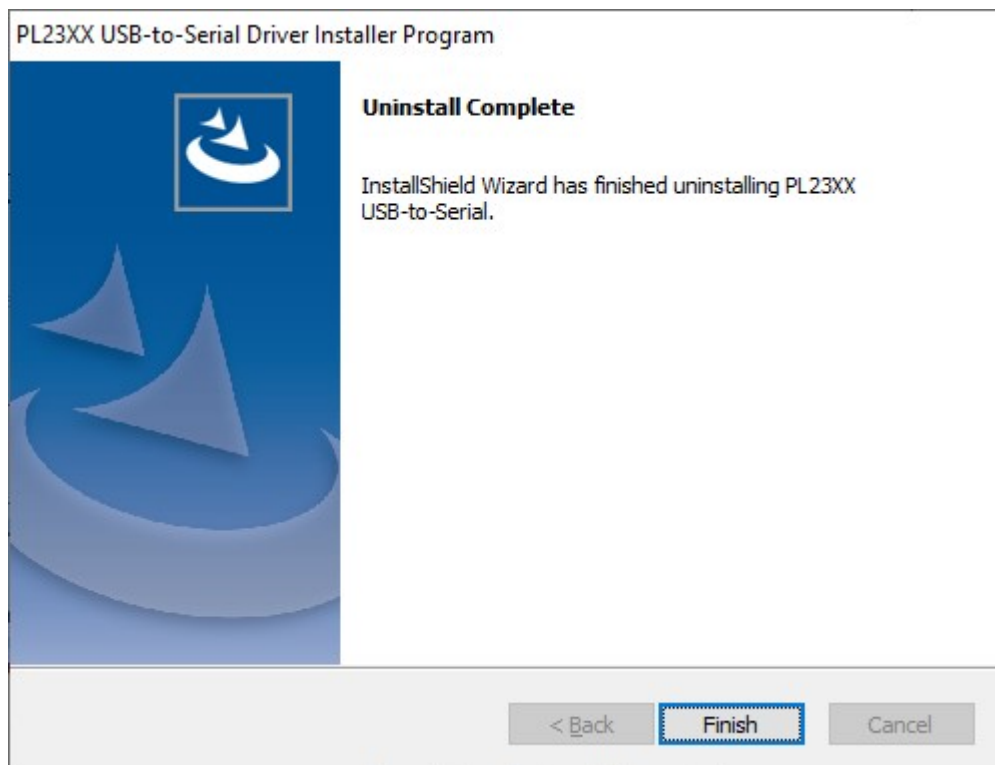
2. InstallShield Wizard will then start the maintenance program and will prompt you to choose if you want to modify, repair, or remove the driver. Click the Remove button and click Next to begin the driver uninstall.



3. The InstallShield Wizard will prompt you to confirm to uninstall. Click Yes to continue.



4. Wait for the InstallShield Wizard to complete the uninstall process. When complete, click Finish to end the program. Wait for some few seconds until the "PL-23XX USB-to-Serial" program is removed from the Control Panel Uninstall (Add or Remove Programs) program list.



5. If you are using Windows Server versions or installed the driver thru **Windows Update**, you may need to do this extra step if driver is not completely uninstalled. Plug back the PL2303 device to the computer and go to Device Manager and right-click “Prolific PL2303GC USB Serial COM Port”. Click Uninstall and click enable the checkbox “Delete the driver software for this device”. Click OK to completely uninstall the driver.

